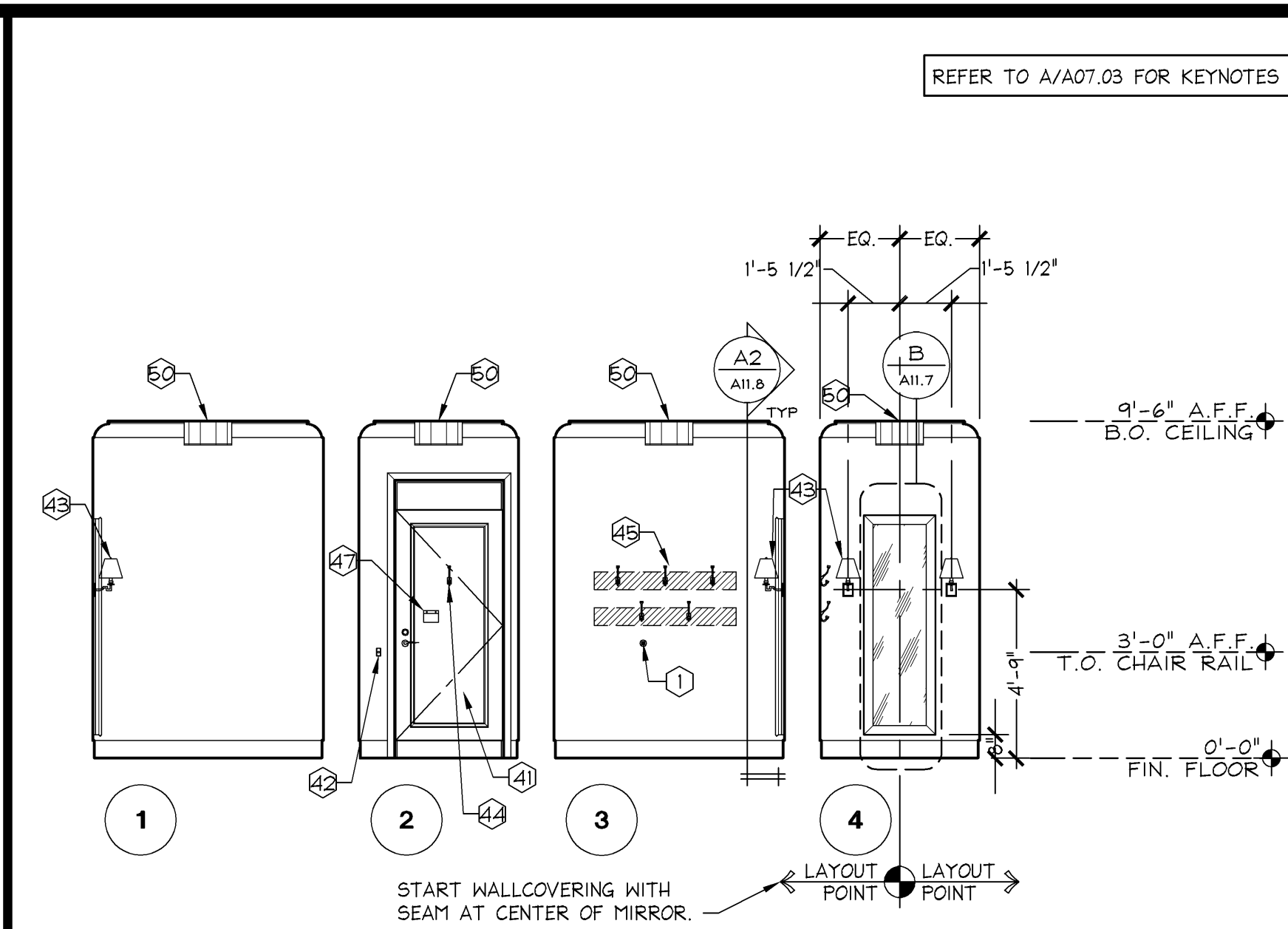
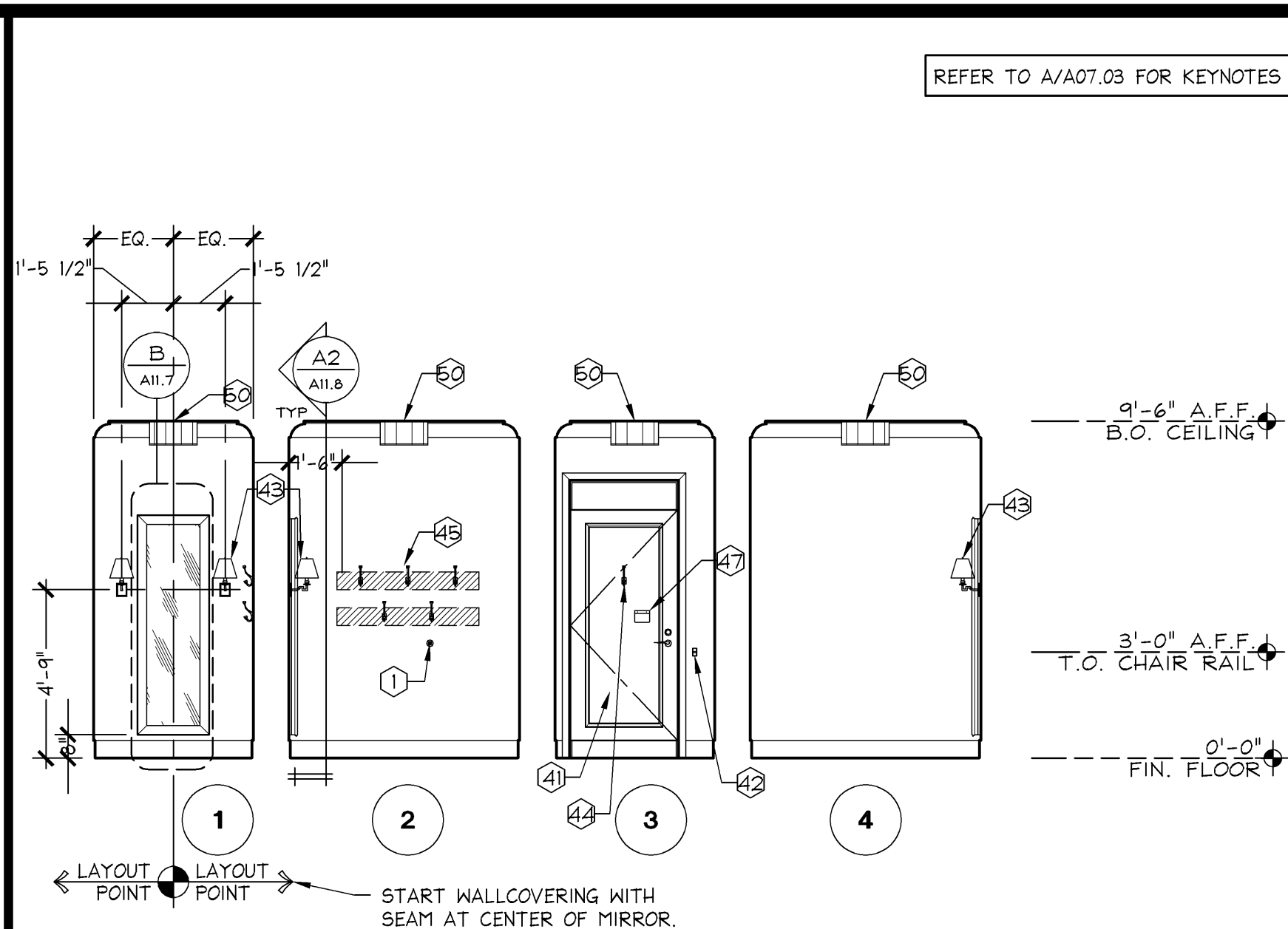


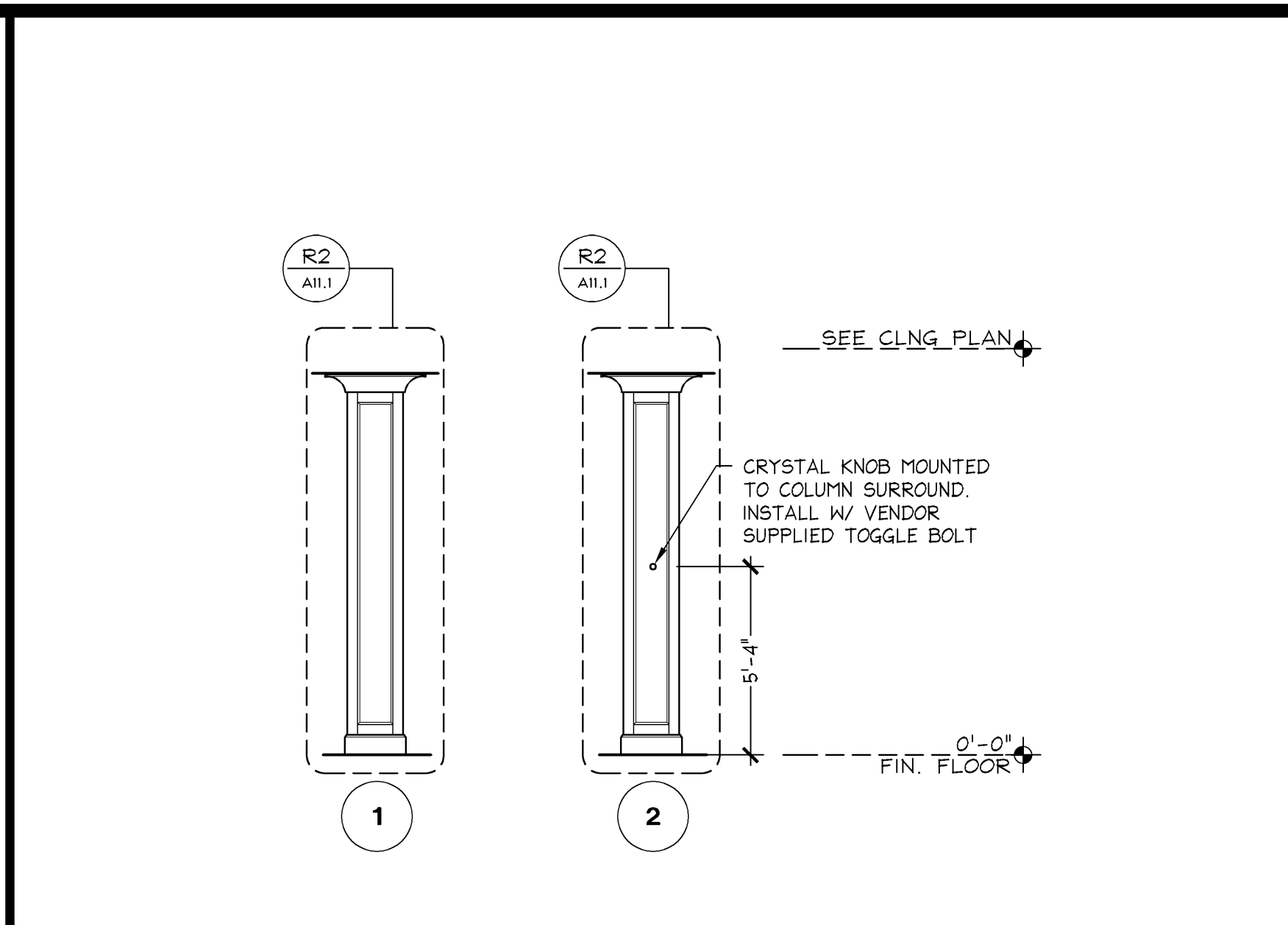
STANDARD FITTING ROOM ELEVATIONS (FR4) - TYPE A	1/4" = 1'-0"	S



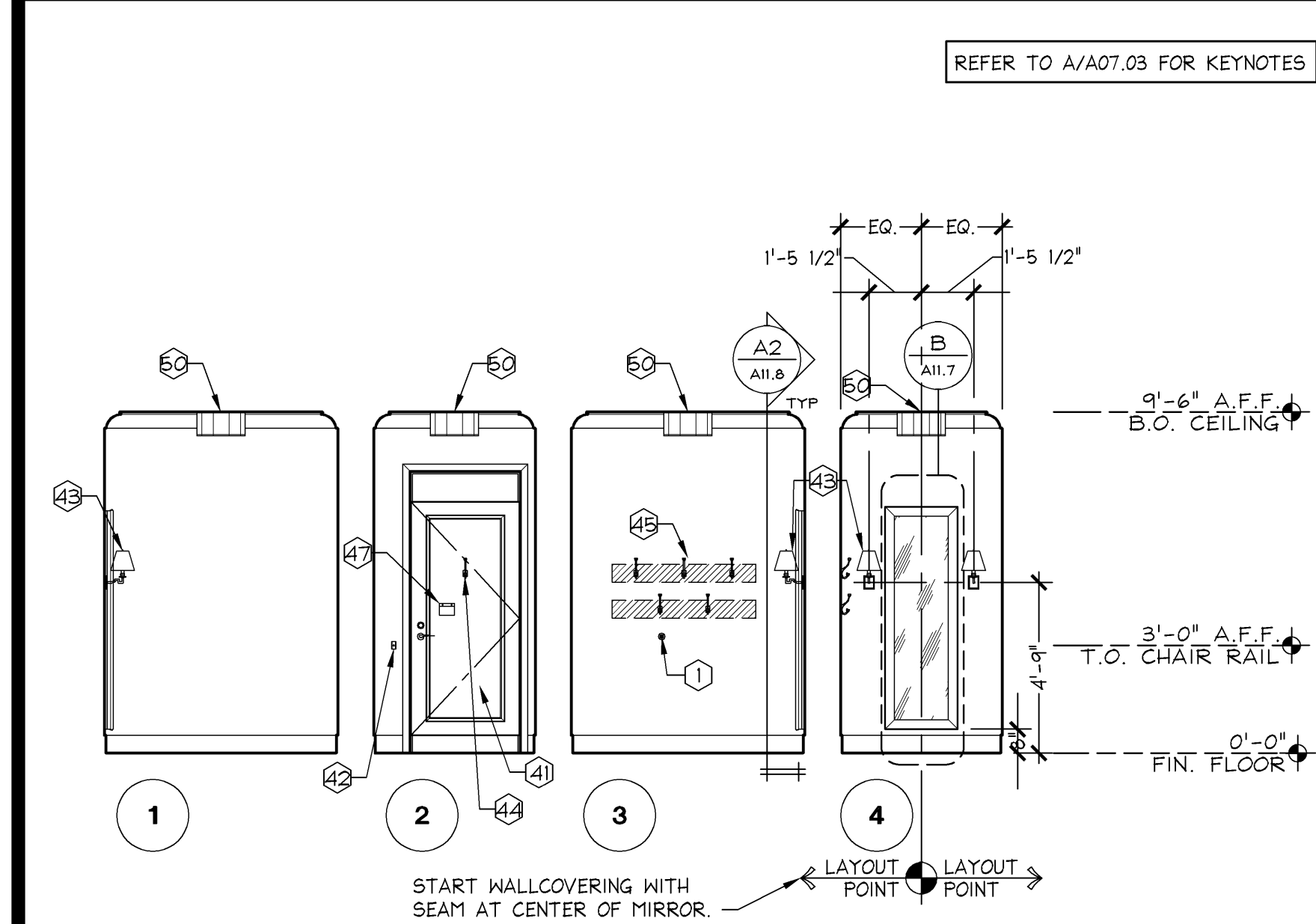
STANDARD FITTING ROOM ELEVATIONS (FR5) - TYPE B	1/4" = 1'-0"	M



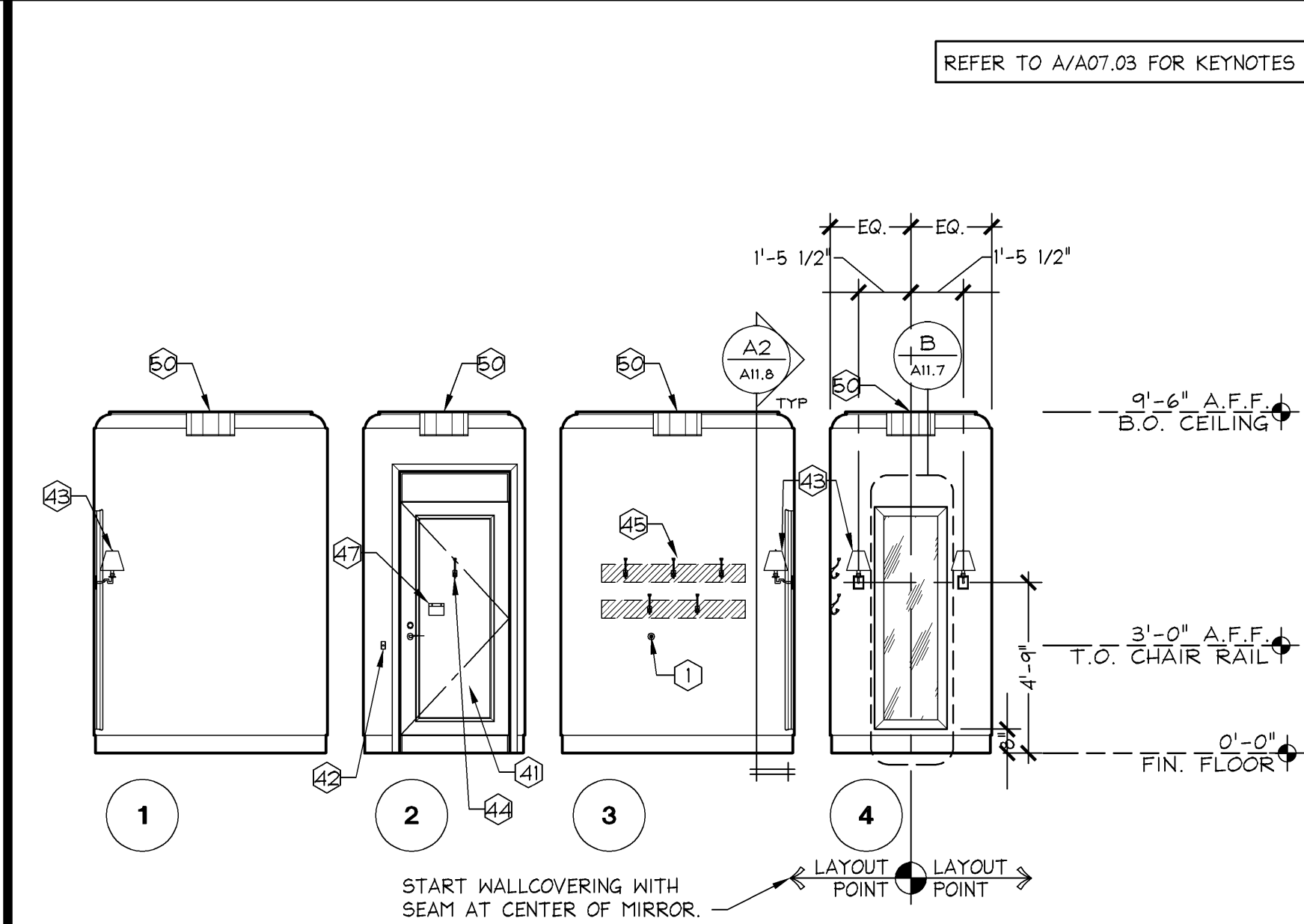
STANDARD FITTING ROOM ELEVATIONS (FR6) - TYPE A	1/4" = 1'-0"	H



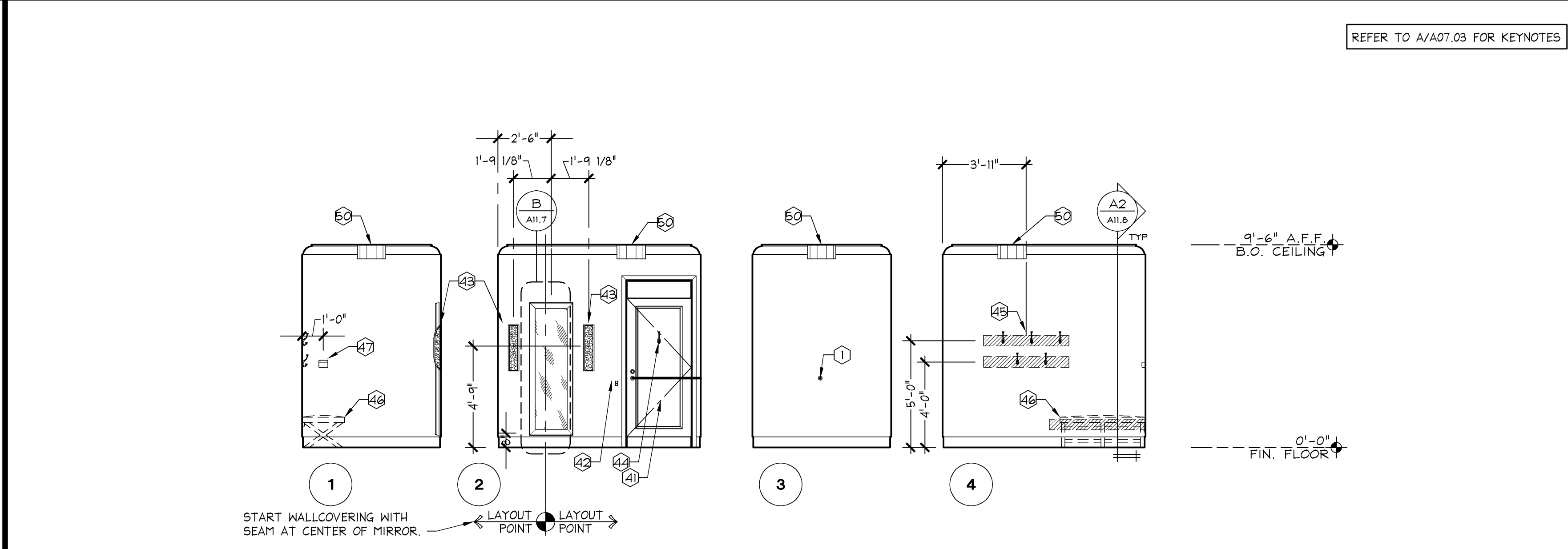
COLUMN ELEVATIONS	1/4" = 1'-0"	D



STANDARD FITTING ROOM ELEVATIONS (FR3) - TYPE B	1/4" = 1'-0"	R



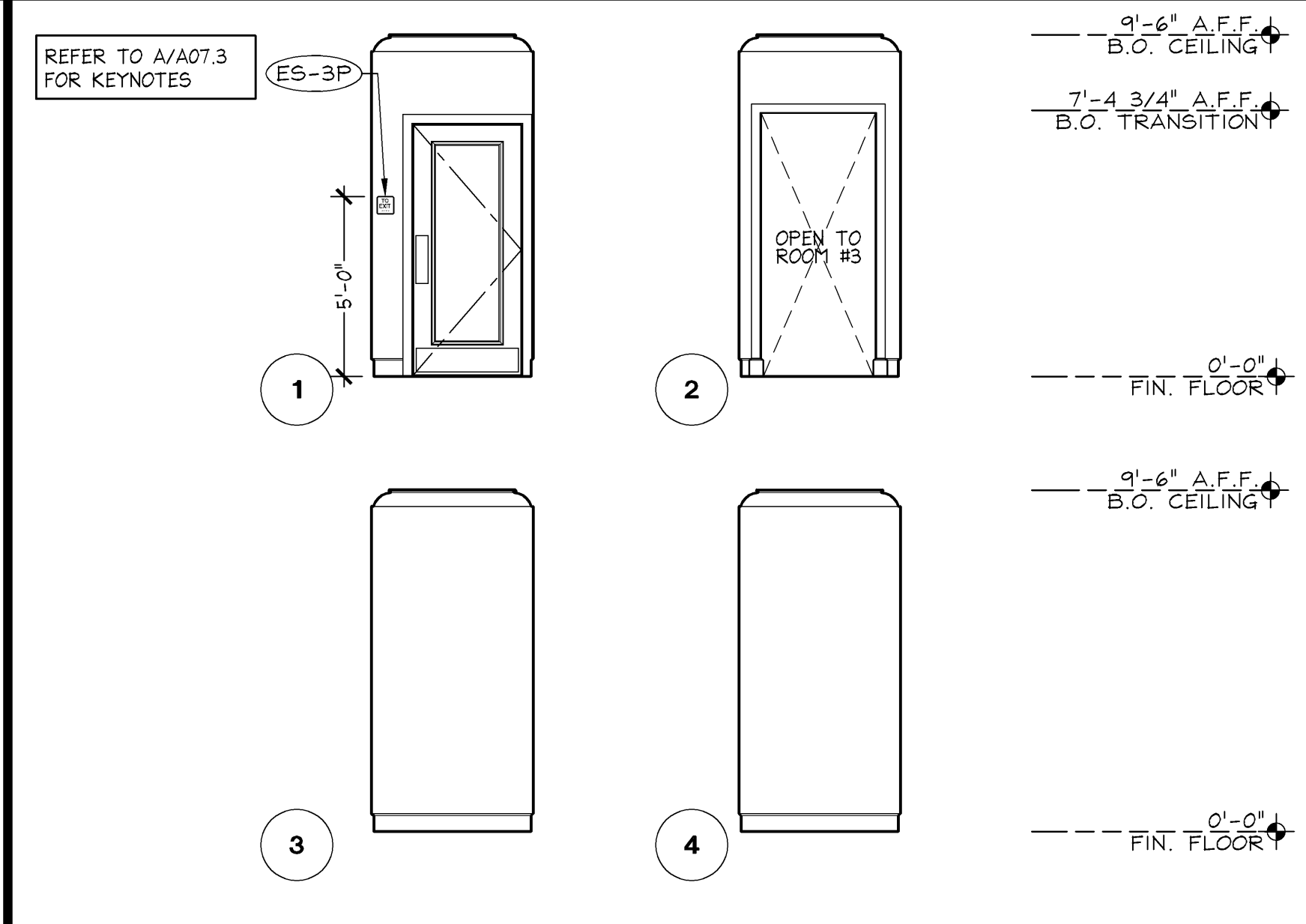
STANDARD FITTING ROOM ELEVATIONS (FR2) - TYPE A	1/4" = 1'-0"	L



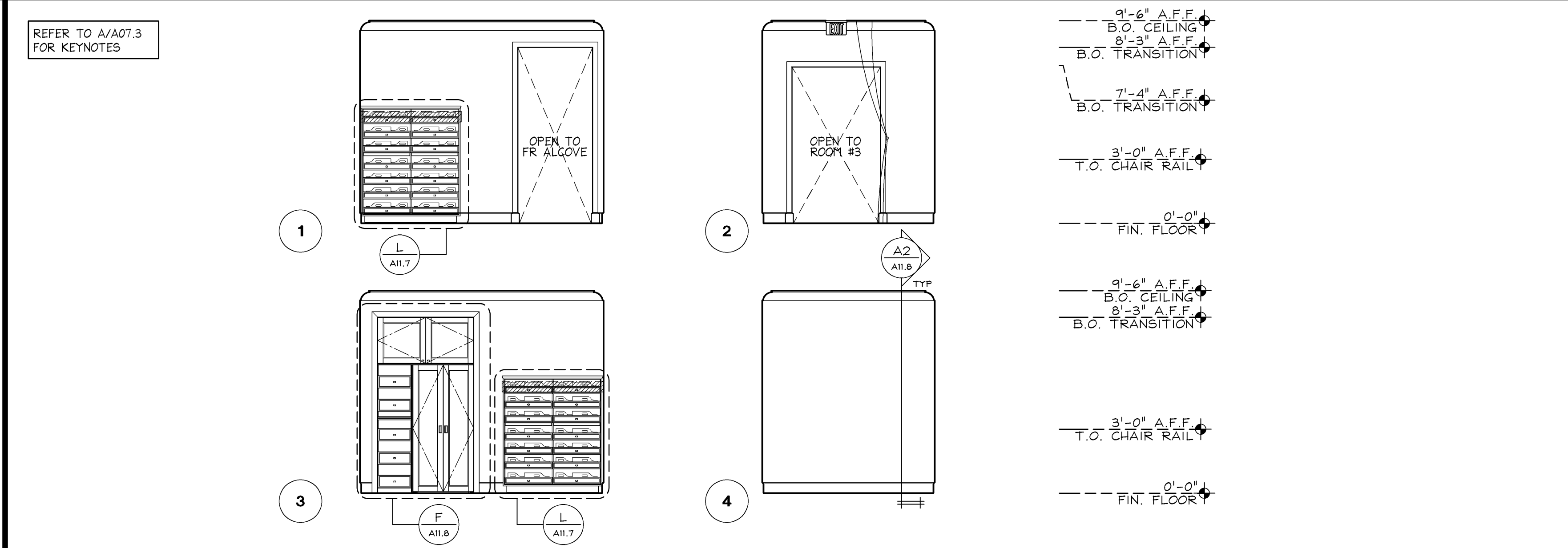
ACCESSIBLE FITTING ROOM ELEVATIONS (AFR 1) - TYPE B	1/4" = 1'-0"	C



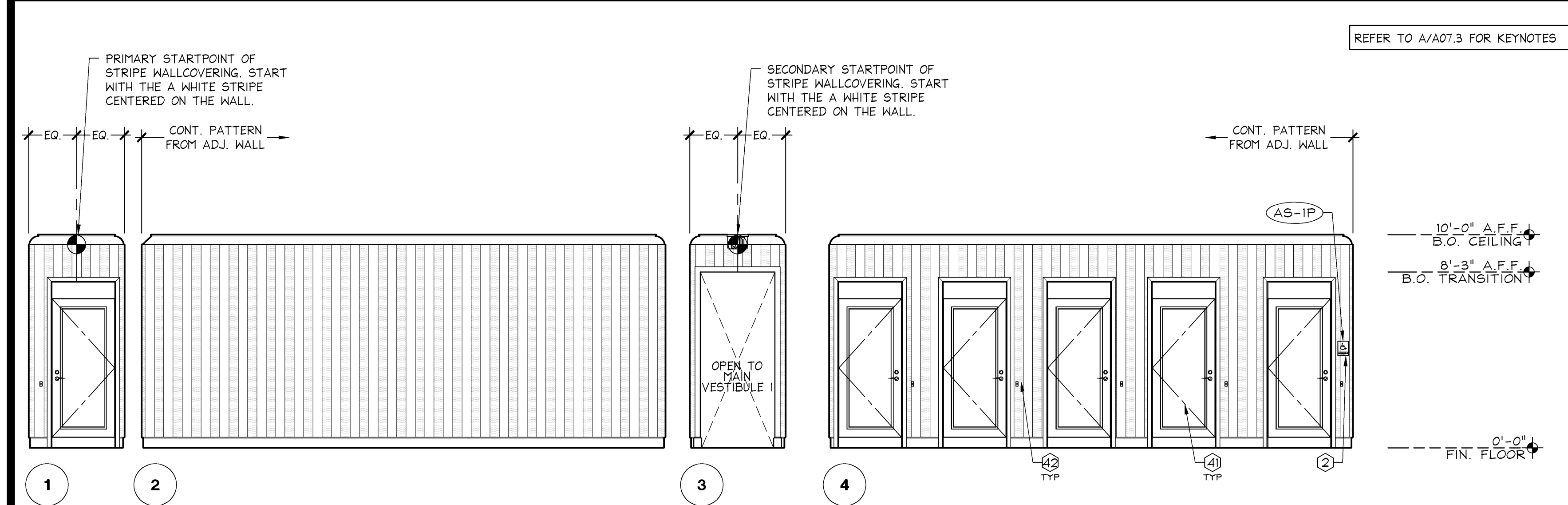
NOT USED	1/4" = 1'-0"	P



MAIN VESTIBULE 2 ELEVATIONS	1/4" = 1'-0"	K



MAIN VESTIBULE 1 ELEVATIONS	1/4" = 1'-0"	B

[illegible]

GENERAL	VSL
<p>① WALL MOUNTED DOOR STOP MOUNTED TO ALIGN WITH DOOR LATCH, G.C. TO VERIFY EXACT LOCATION IN FIELD AND INSTALL METAL BLOCKING PER DETAIL E/A12.1</p> <p>② ACCESSIBLE SIGNAGE. REFER TO DETAIL H/A00.04.</p> <p>③ 18" MIN. CLEAR FLOOR SPACE AT ACCESSIBLE SIGNAGE, CENTERED ON SIGNAGE.</p>	<p>④1 PRE-FINISHED DOOR W/ ARTWORK AND PRE-INSTALLED SURFACE APPLIED TRIM. EACH DOOR HAS A PHRASE. SPECIFIC LOCATION OF EACH PHRASE IS UNIMPORTANT. ARTWORK IS NOT APPLIED TO THE FITTING ROOM SIDE OF THE DOOR.</p> <p>④2 PAGING SYSTEM BUTTON - REFER TO ELECTRICAL DRAWINGS FOR SPECS AND POWER/ DATA REQUIREMENTS. MOUNT @ 3'-3" A.F.F. AND 4" FROM EDGE OF CASING, SEE DETAIL M/A12.2 FOR BLOCKING REQUIREMENTS.</p> <p>④3 WALL SCONCE. REFER TO ELECTRICAL DRAWINGS FOR POWER REQUIREMENTS. REFER TO ELEVATION FOR MOUNTING HEIGHT.</p> <p>④4 HOOK INSTALLED ON FR SIDE OF DOOR @ 5'-0" A.F.F. W/ #8 X 1" WD SCREWS.</p> <p>④5 FITTING ROOM HOOKS. REFER TO DETAIL K/A11.7.</p> <p>④6 ACCESSIBLE FITTING ROOM BENCH. G.C. TO SECURE TO WALL PER DETAIL J/A11.7.</p> <p>④7 PAPER PANTY HOLDER. MOUNT @ 4'-0" A.F.F. INSTALL W/ VENDOR SUPPLIED SCREWS AND GYP. BD. ANCHORS.</p> <p>④8 PENDANT LIGHT FIXTURE W/ BOTTOM AT 7'-6" A.F.F. REFER TO ELEC DWGS.</p> <p>④9 VIGNETTE INCLUDES MIRROR, TABLE, AND TABLE LAMP.</p> <p>⑤0 FITTING ROOM PENDANT.</p>
<p><u>PINK</u></p> <p>②1 NOT USED</p>	<p>VSL SEALANT NOTE: G.C. TO CAULK AROUND BASE, DOOR CASING, AND MIRRORS WITH CLEAR SEALANT IN ROOMS WITH PINK PAINTED TRIM AND BLACK SEALANT IN ROOMS WITH BLACK PAINTED TRIM.</p>